

# Ruwac USA Industrial Vacuums

## Slurry Pro

### Parts Manual

---

Model No.

Serial No.

Filter No.

Start-Up Date



Version: V2.5 4/3/20









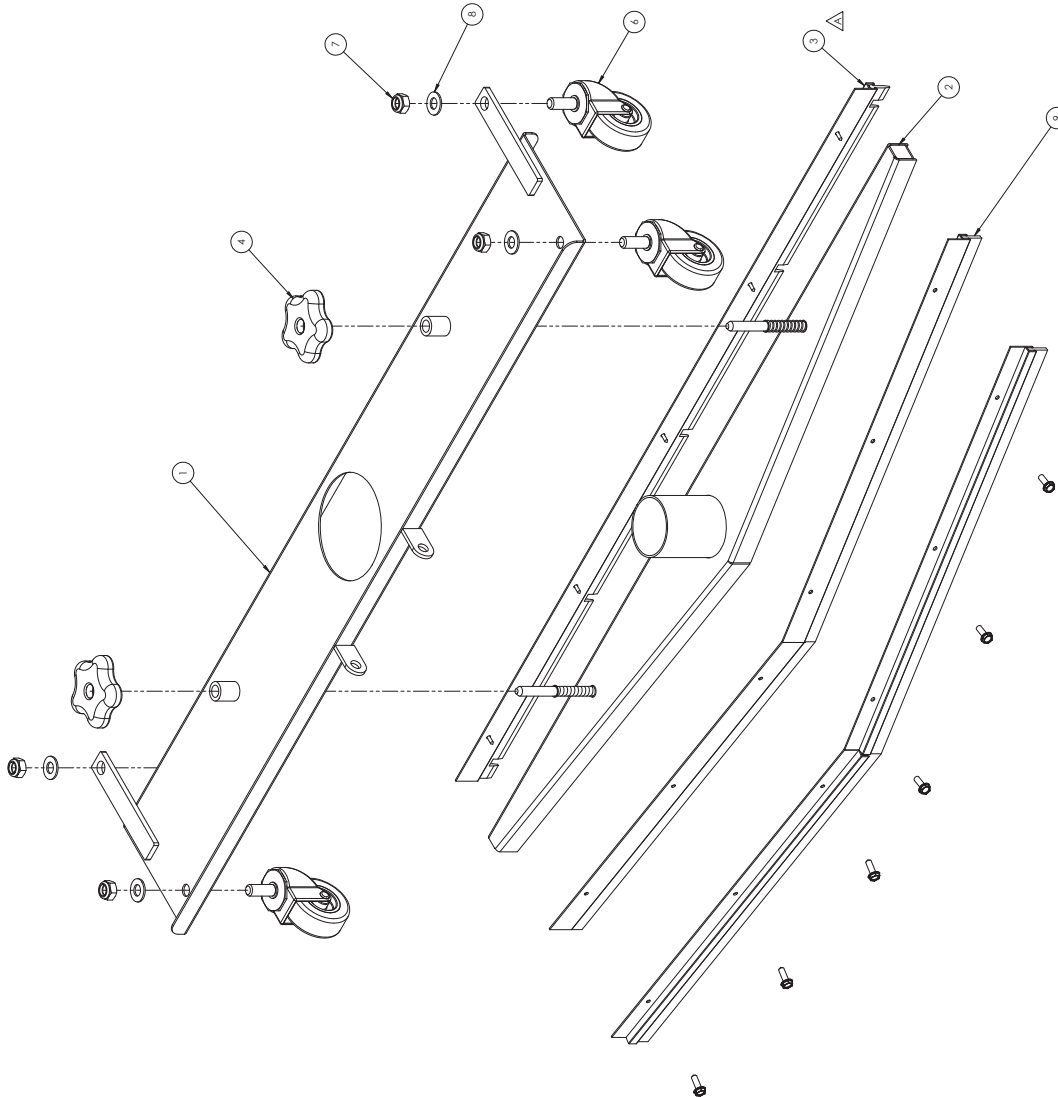








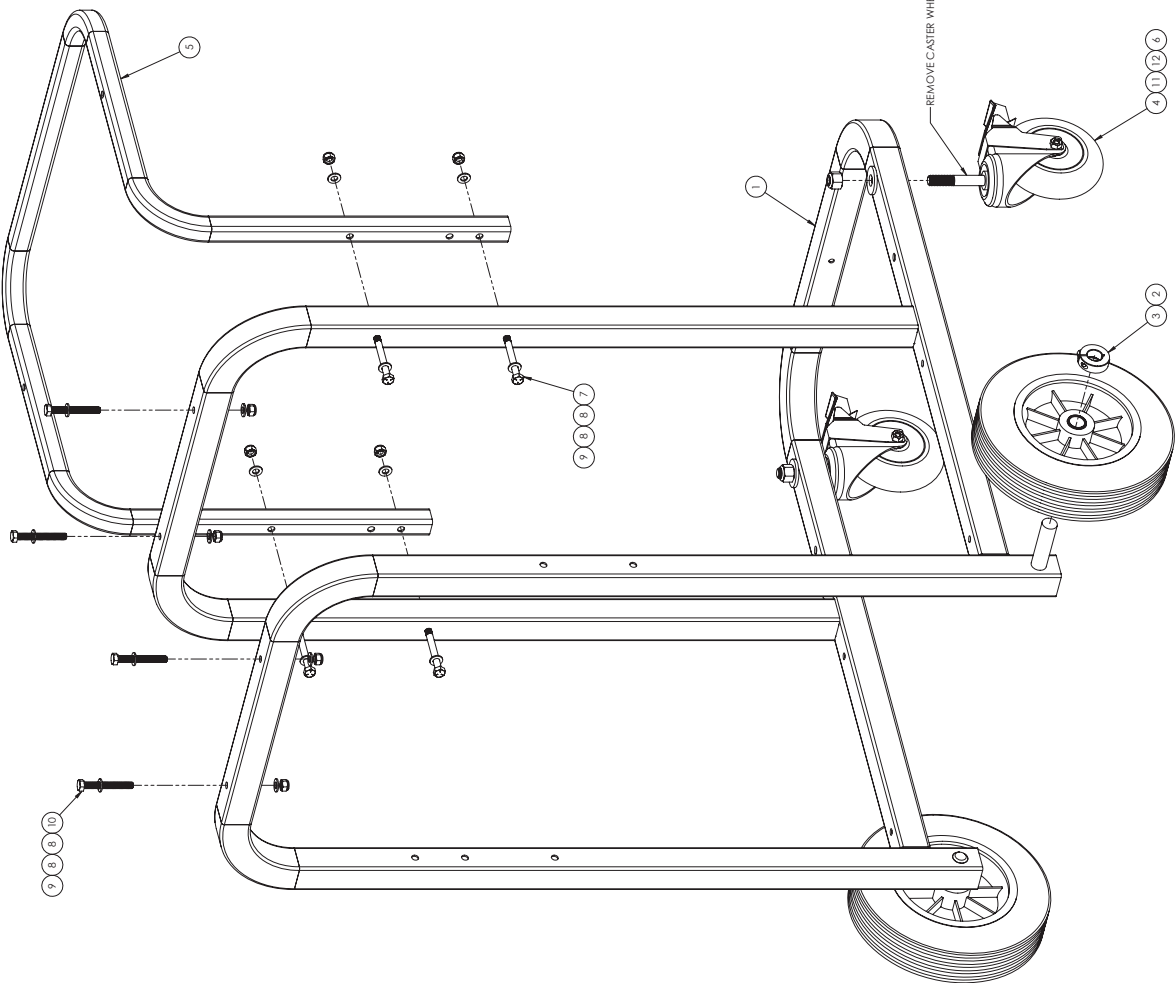
REVISIONS			
ZONE	REV.	DESCRIPTION	DATE
B4	A	ECO 1971-UPDATED PART NO. 5018DA4	4/12/2019
			APPROVED
			JIF



5018DA4 REAR SQUEEGEE REPLACEMENT KIT  
INCLUDES (4) TRACKS, (2) SQUEEGES, (6) MOUNTING SCREWS  
TRACK/SQUEEGES ASSEMBLED BY RUWAC

ITEM NO.	PART NO.	DESCRIPTION	DRAWING NO.	QTY.
1	5018A	FLOOR SWEEP FRAME, 32IN	000 N 0022 US	1
2	5018B	FLOOR SWEEP VACUUM HEAD, 50MM	000 N 0022 US	1
3	5018DA3	SLOTTED SQUEEGEE, FLOOR SWEEP, 32IN		1
4	5018I	ADJUSTMENT KNOB		2
5	5018K	SPRING 4800D X .340D X 1.5LG		2
6	5018F	CASTER, 2IN, .375-16 X 1IN STEM		4
7	37504	LOCK NUT 3/8-16		4
8	20192	WASHER FLAT M10		4
9	5018DA4	REAR SQUEEGEE REPLACEMENT KIT		1

DATE	DATE	DATE	DATE	DATE	DATE
12/07/19	12/07/19	12/07/19	12/07/19	12/07/19	12/07/19
DESIGNED	DESIGNED	DESIGNED	DESIGNED	DESIGNED	DESIGNED
CHECKED	CHECKED	CHECKED	CHECKED	CHECKED	CHECKED
APPROVED	APPROVED	APPROVED	APPROVED	APPROVED	APPROVED
DATE	DATE	DATE	DATE	DATE	DATE
12/07/19	12/07/19	12/07/19	12/07/19	12/07/19	12/07/19
BY	BY	BY	BY	BY	BY
JIF	JIF	JIF	JIF	JIF	JIF
SA WINTER ST	SA WINTER ST	SA WINTER ST	SA WINTER ST	SA WINTER ST	SA WINTER ST
HOLYOKE, MASS 01040	HOLYOKE, MASS 01040	HOLYOKE, MASS 01040	HOLYOKE, MASS 01040	HOLYOKE, MASS 01040	HOLYOKE, MASS 01040
TITLE: FLOOR SWEEP ASM					
DOUBLE REAR SQUEEGEE					
SLOTTED FRONT SQUEEGEE					
SIZE DWG. NO. 50183301					
SCALE: 1:4 (N/E/G/E)					
REV. A					
SHEET 1 OF 1					



ITEM NO.	PART NO.	DESCRIPTION	DRAWING NO.	QTY.
1	563002	DIRECT BAGGER FRAME DOUBLE STACK		1
2	31846	CASTER, 10IN X 2.75, SOLID TIRE		2
3	31801	SHAFT COLLAR, .75IN		2
4	30204	CASTER SWIVEL 9IN, BOLT HOLE		2
5	563006	DOUBLE STACK HANDLE BAR		1
6	500045	LOCK NUT 1/2-13		2
7	312505	BOLT, HEX HEAD, 3/25-18, 3.25LG, ZINC		4
8	25061	M8 FLAT WASHER		16
9	31202	5/16-18 LOCK NUT		8
10	31207	BOLT, HEX, 5/16-18 X 1 1/2		8
11	50011	LOCK WASHER 1/2		4
12	50001	DOUBLE STACK FRAME DOUBLE STACK		2

DATE	3/13/17	BY	SA
DESIGNED BY	SA	DATE	3/13/17
CHECKED BY	SA	DATE	3/13/17
APPROVED BY	SA	DATE	3/13/17
REVISIONS			
NO.	1	DESCRIPTION	DOUBLE STACK FRAME, SLURRY VAC, NON-EX
DATE	3/13/17	BY	SA
SIZE	DWG. NO.	93280500	REV
SCALE	1:8	WEIGHT	1
SHEET 1 OF 1			



